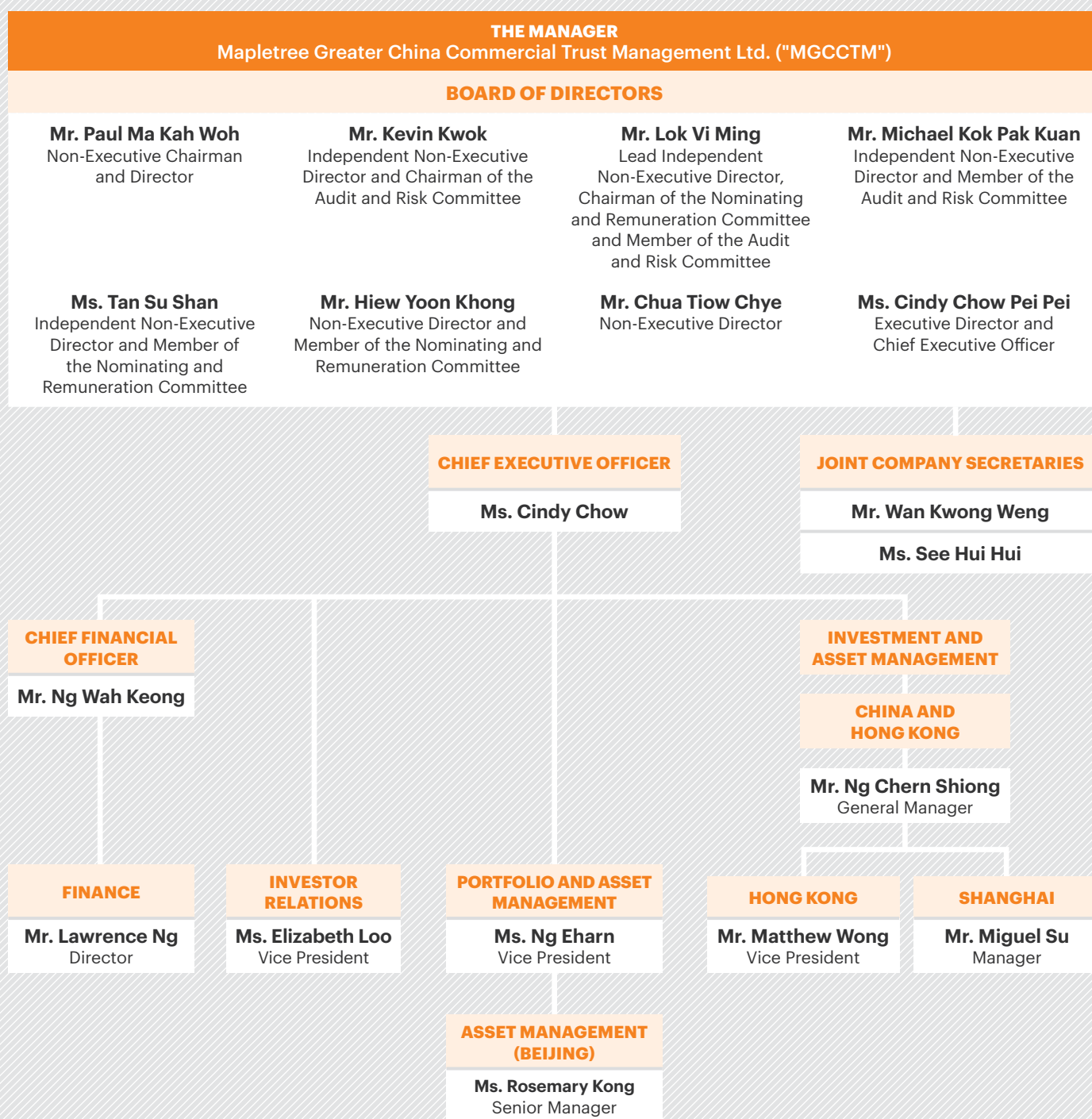
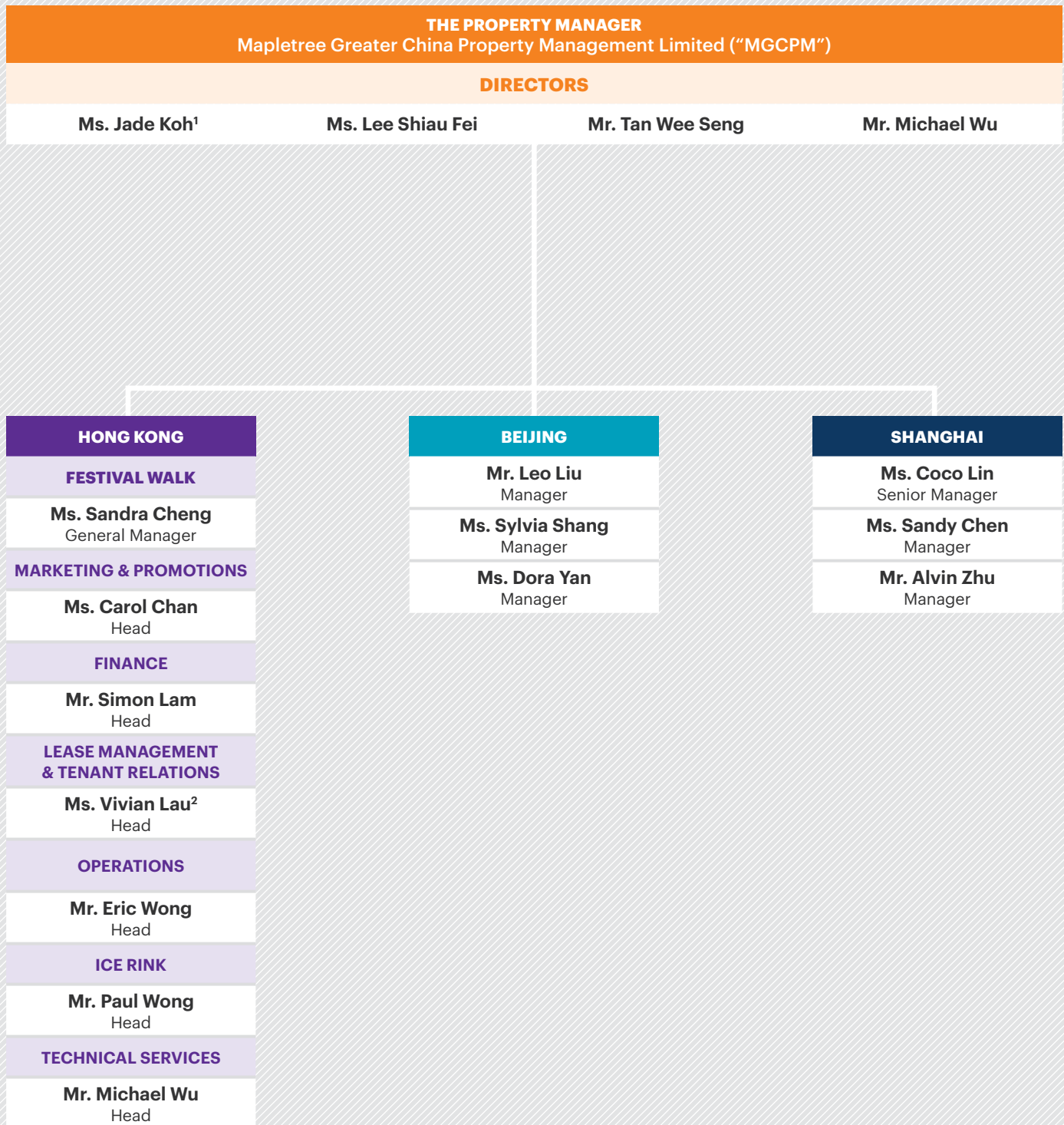


# ORGANISATION STRUCTURE

(FY17/18)<sup>1</sup>



<sup>1</sup> Please refer to MGCCT's SGX-ST Announcement dated 28 March 2018 titled "Proposed Acquisition of a Portfolio of Six Freehold Office Properties in Greater Tokyo, Japan". The transaction was approved by Unitholders at the Extraordinary General Meeting held on 24 April 2018. Following the completion of the Proposed Acquisition on 25 May 2018, MGCCT was renamed "Mapletree North Asia Commercial Trust" and the Manager was renamed "Mapletree North Asia Commercial Trust Management Ltd.". The Japan Portfolio is managed by the local management team from Mapletree Investments Japan Kabushiki Kaisha, an indirect wholly-owned subsidiary of the Sponsor.



<sup>1</sup> Ms. Jade Koh was appointed in FY17/18, with effect from 31 May 2017.

<sup>2</sup> Ms. Vivian Lau resigned in 4Q FY17/18. Ms. Wendy Lee was appointed in 1Q FY18/19 as Head, Lease Management and Tenant Relations.